

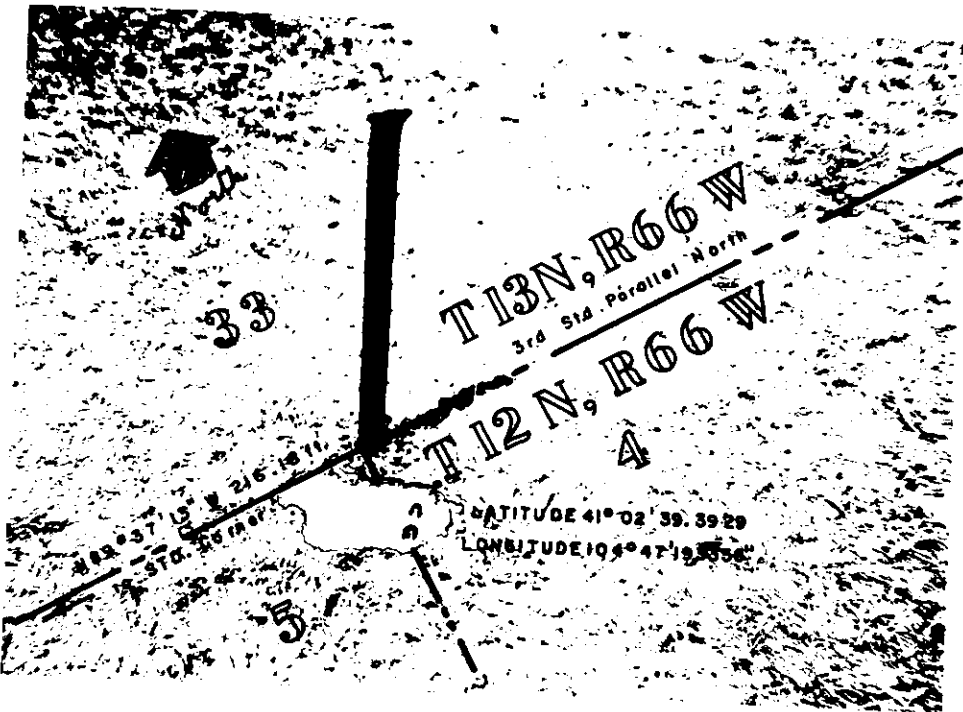
State of Wyoming Corner Record

(In compliance with the *CORNER PERPETUATION AND FILING ACT*, Wyoming Statutes, 1977, Section 36-11-101, et. seq., and the Rules and Regulations of the Board of Registration for Professional Engineers and Professional Land Surveyors)

Reverse side of this form may be used if more space is needed.

Record of original survey and citation of source of historical information (if corner is lost or obliterated). Description of corner monumentation evidence found and/or monument and accessories established to perpetuate the location of this corner. Sketch of relative location of monument, accessories, and reference points with course and distance to adjacent corner(s) (if determined in this survey). Method and rationale for reestablishment of lost or obliterated corner.

Found Granite Boulder very well set and flush with the surrounding ground. This stone is clearly marked "CC" for closing corner. Said closing corner lies S 89°37'13" E a distance of 216.18 feet from the standard corner of S.32/33/5. Perpetuated said corner by setting a 3"x $\frac{1}{2}$ "x52" iron stake on the North side of said stone and painted this stake blue and gold and marked "CC" Sec 5 on the South side of this stake.



RECEIVED
 CHEYENNE COUNTY CLERK
 CHEYENNE, WY.
 1991 SEP -2 PM 3:37
 149886

Date of Field Work: _____ Office Reference: _____

CROSS INDEX DIAGRAM

	1	2	3	4	5	6	7	8	9	10	11	12	13	14	15	16	17	18	19	20	21	22	23	24	25
A																									
B																									
C		6																							
D			5																						
E				4																					
F					3																				
G						2																			
H							1																		
I																									
J																									
K																									
L																									
M																									
N																									
O																									
P																									
Q																									
R																									
S																									
T																									
U																									
V																									
W																									
X																									
Y																									
Z																									

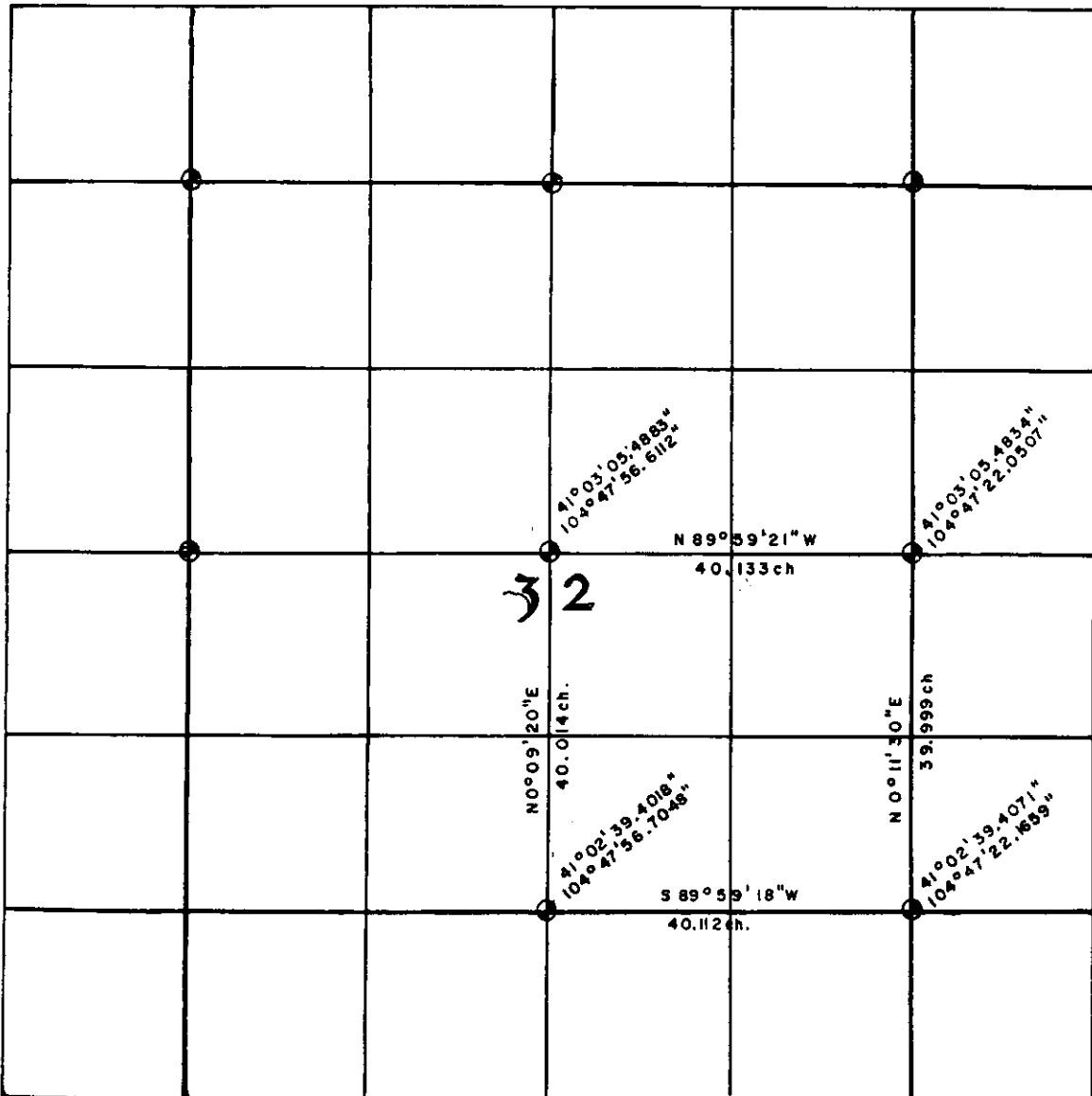
Firm/Agency, Address
TERRESTRIAL SURVEYING &
MAPPING
1127 Terry Ranch Road
Cheyenne, Wyoming 82007
 Telephone Number: (307) 634-9360

This corner record was prepared by me or under my direction and supervision.
 SEAL & SIGNATURE



Section Diagram

Project _____ **Date:** AUGUST 1994
Section 5 **Township** 12 NORTH **Range** 66 WEST **Meridian** 6TH P.M.
County LARAMIE **State** WYOMING **Scale** _____



36	31	32	33	34	35	36	31
1	6					1	6
12							7
13							18
24							19
28							30
36	31	X				36	31
1	6	X	4	3	2	1	6

Notes: _____

TERRESTRIAL SURVEYING & MAPPING Co.
 P.O. Box 82; CHEYENNE, WYOMING 82003

